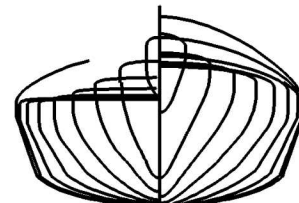




ELLESMERE

With an outline mirroring the silhouette of traditional sea kayaks, the Ellesmere combines the advantages of the reverse hard chine with a semi-arched hull. Designed for the experienced paddler, standard equipment includes a skeg, sturdy anodized aluminium footrests, a backband seat, thigh braces, recessed fittings and a deck line. The kayak also features a practical paddle rest in front of the cockpit. A day hatch is available as an option. The Ellesmere is offered with a small (Ellesmere OC) or standard-sized cockpit.



This 212 688 km² island in Nunavut is covered with snow and ice and dotted with glaciers and fjords. Ellesmere is home to a variety of wildlife species including the wolf, caribou, hare, fox, seal, walrus, whale, polar bear and birds such as the snow goose, oldsquaw, eider duck, gyrfalcon and snowy owl.

Material: Composite Options: Day hatch, dia 8 po (20 cm), Comfort seat	Length 17' (5.18 m)	Beam 22" (55.9 cm)	Bow depth 13" (33 cm)	Bow depth OC 12" (30.5 cm)
	Cockpit 16" x 30" (41 x 76 cm)	Weight: fibreglass/Kevlar®/carbon 51/46/42 lb (23/20.9/19.1 kg)		Stern depth 8" (20,3 cm)
	Cockpit OC 15½" x 21" (39 x 53 cm)	Volume 92 gal us (350 l)	Bow compartment dia: 9 ½" : 18 gal us (24 cm : 70 l)	
	Stern compartment 16 ½" x 11 ¾" : 29 gal us (42 x 30 cm : 110 l)	Load capacity min/max 120 lb / 275 lb (55 kg / 125 kg)		

BORÉALDESIGN

