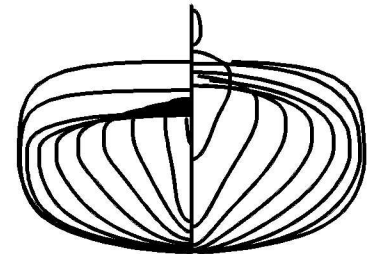




With an innovative design, look and feel, the **epsilon** offers the optimal combination of stability and manoeuvrability.

The series is available in composite or polyethylene, and includes 3 sizes that will suit every paddler irrespective of height or weight.



epsilon, the logical choice!

P100 / C100

P200 / C200

P300 / C300

Paddler weight	90-160lb (41-73kg)	140-225lb (64-102kg)	200-280lb (91-127kg)
Length	16'4" (4.98m)	17' (5.18m)	17'6" (5.34m)
Beam	22½" (57.2cm)	23½" (59.7cm)	24¼" (61.6cm)
Cockpit	16" x 31" (41 x 79cm)	16" x 31" (41 x 79cm)	17" x 33" (43 x 84cm)
Weight Polyethylene	62lb (28kg)	64lb (29kg)	66lb (30kg)
Weight Fibreglass/Kevlar®	52/47lb (23.5/21.5kg)	54/49lb (24.5/22.3kg)	56/51lb (25.5/23.2kg)
Volume	375 l (99 gal us)	415 l (110 gal us)	450 l (119 gal us)
Front depth	12¼" (31.1cm)	12¾" (32.4cm)	13½" (34.3cm)
Rear depth	8¾" (22.2cm)	9" (22.9cm)	9¼" (23.5cm)

BORÉALDESIGN

